



# RITEC INTERNATIONAL LIMITED

- Developed ClearShield® durable non-stick glass surface treatment in 1981
- Ritec International Limited formed in 1987, specialising in transparent, non-stick, easy-clean surface technologies
- Global reach through two subsidiaries and many Marketing Partners

# THE RITEC FAMILY



**Ritec International Limited**

Based in London, UK



**Ritec Services**

Subsidiary of Ritec International  
Based in Raamsdonksveer, Netherlands



**ClearShield Technologies, LLC**

Subsidiary of Ritec International  
Based in Chicago, USA

## RITEC'S GLOBAL NETWORK



## 2 subsidiaries covering North America and Europe

## 24 Marketing Partners

## Over 70 countries served

UNTREATED

TREATED



# RITEC SERVICES



Glass Renovation



Non-Stick Protection

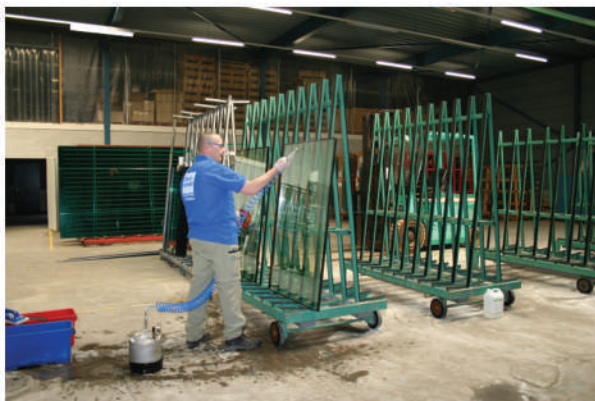
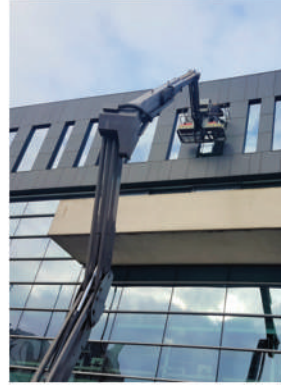


Maintenance for glass,  
metals, plastics & paintwork



# RITEC SERVICES

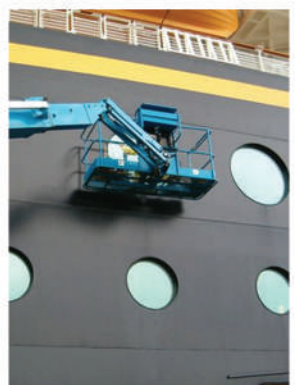
Formed in 2010 by highly experienced staff with decades of non-stick surface treatment expertise



International 'Centre of Excellence' application and training facilities



Consists of specialist Ritec Marine Services division



# THE RITEC SYSTEMS



Glass Renovation, non-stick protection & maintenance of glass surfaces



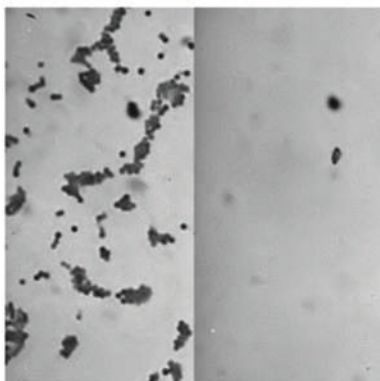
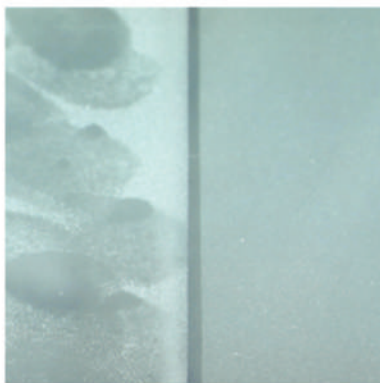
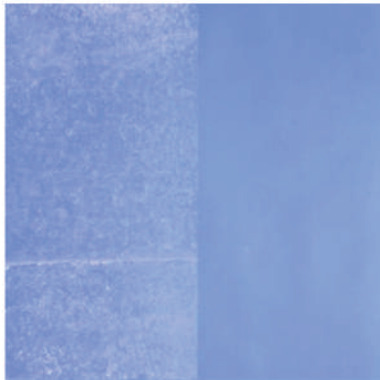
Non-stick protection & renovation of metals, plastics and paintwork



Non-stick protection & renovation for glass and ceramic electrical insulators, as used by National Grid UK

UNTREATED

TREATED



# The ClearShield Eco-System®



Glass Renovation



Non-Stick Protection



Maintenance and,  
protection specialized for  
glass



## What is The ClearShield Eco-System®?

The ClearShield Eco-System® is a unique, award-winning, fully-integrated system for:

### **GLASS RENOVATION**

Brings glass already installed back to its as-new appearance when all else fails

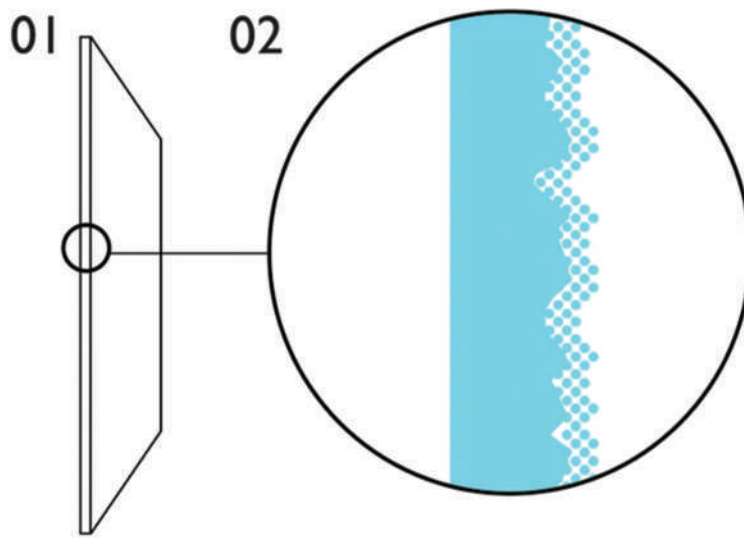
### **GLASS 'NON-STICK' PROTECTION**

Converts the surface of ordinary glass into ClearShield Eco-Glass® to decrease the required maintenance and enhance the clarity and sparkle of the glass

### **GLASS MAINTENANCE**

A simple and environmentally friendly after-care programme allows for ClearShield Eco-Glass® to perform for the life of the glass

## How ClearShield® Works



01 Glass surface

02 Magnification of ClearShield  
Eco-Glass®

## Benefits of ClearShield Eco-Glass®

ClearShield® protected glass, also known as ClearShield Eco-Glass®:

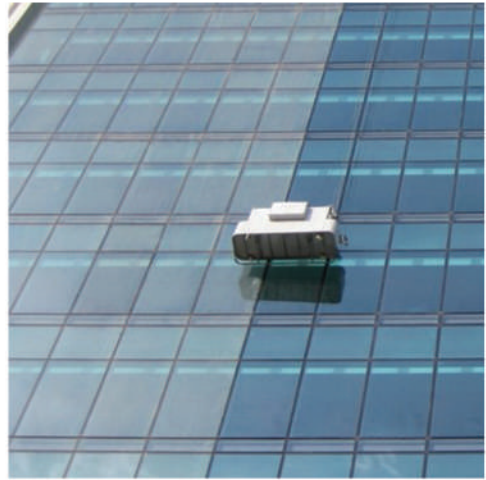
- resists staining and discolouration
- is always easier to clean and keep clean
- typically halves frequency of cleaning

# Track Records - Architectural



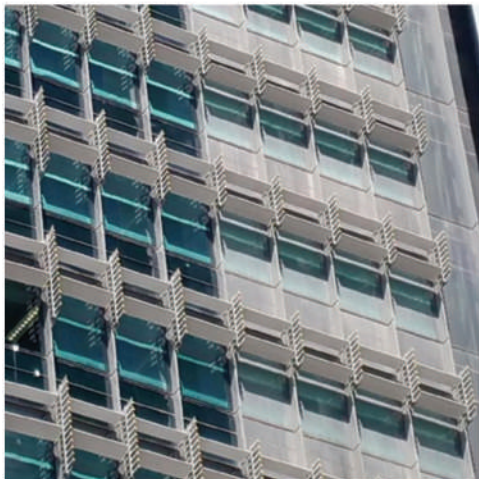
**Grand Hotel  
Tijuana**

Mexico



**Al Salam Avenue  
Tower**

Dubai



**Barangaroo Sydney  
Tower 2**

Australia



**Educatorium**

The Netherlands

# Track Records - Sandblasted Glass



## Rockefeller Center

New York, USA

# Track Records - Railways



## Luton Parkway Station

United Kingdom

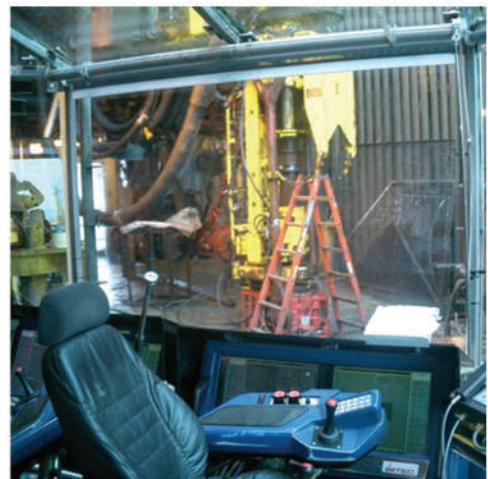


## Track Records - Marine



**Eide Lift 2 Ship**

## Track Records - Offshore



**Ekofisk 2-4-X Drilling Rig**  
North Sea



# Track Records - Residential



## Casa Caribe

Mexico



## Private Residence

India

# The Ritecoat System™



System specialized for protecting metals from rust and harsh environment conditions



Non-Stick Protection



Renovation and protection specialized for metal, Steel, Aluminium and power coated surfaces



# The Ritecoat System™ for Metal, Painted and Plastic Surfaces

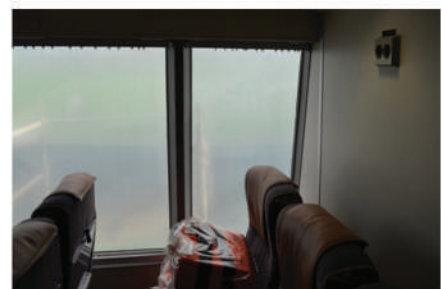
In normal environmental conditions, even the toughest surfaces deteriorate.

## **METALS CORRODE EVEN STAINLESS STEEL STAINS**

Most exterior and interior surfaces in buildings, marine vessels and transportation vehicles are high-maintenance and are easily stained/discoloured by atmospheric pollution and other contaminants.

Harsh and abrasive cleaning methods cause further surface degradation. As a result, the surfaces lose their original appearance and performance.

- Steel – bare, galvanised and stainless
- Aluminium – bare and anodised
- Brass
- Powder coating
- Polycarbonate





The Ritecoat System™ converts ordinary, high-maintenance materials into non-stick, easy-clean surfaces. Working like non-stick cookware, Ritecoat™ surfaces have higher quality, added convenience and added value because they:

- **are much easier to clean**, eliminating the need for harsh and abrasive cleaning methods
- **look cleaner and brighter for longer between cleanings**, improving user satisfaction
- **resist surface contamination, weathering and staining/discolouration** keeping the original surface appearance and performance longer

The Ritecoat System™ is proven in architectural, marine and transportation markets. It has achieved countless track records under all types of conditions throughout the world.

For surfaces already stained/discoloured, the Ritecoat System™ restores them to an as-new appearance whilst a simple and economical after-care programme keeps Ritecoat® surfaces looking and performing like new for much longer.

# Special Properties and Performance Features of Ritecoat R630™

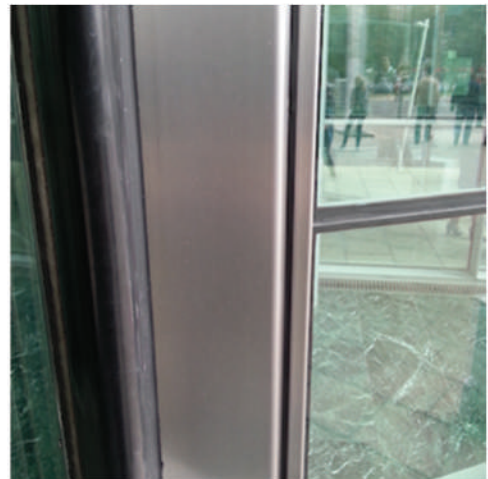
- High gloss
- Single pack
- Transparent
- Highly resistant to weathering, graffiti and chemical attack by acids, alkalis and solvents
- Non-yellowing
- Good abrasion resistance
- Strong water repellency
- Thermally stable
- UV stable
- Recommended for small areas (0.5m<sup>2</sup> at a time) for a uniform finish



# Track Records



**The Red Apple  
Residential Complex**  
Rotterdam, The Netherlands



**The Duna Tower  
Office Building**  
Budapest, Hungary

# Track Records



## Carnival Destiny

Cruise Liner



## Train Station

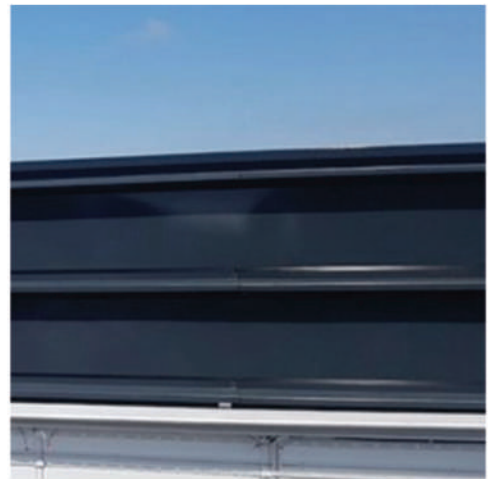
Utrecht, The Netherlands

# Track Records



## Retail Unit

Breda, The Netherlands





**RITEC INTERNATIONAL LTD**

15 Compass West Estate, West Road, London NO 17XL, UK  
T: +44 (0)20 8344 8210  
E: [info@ritec.co.uk](mailto:info@ritec.co.uk) W: [www.ritec.co.uk](http://www.ritec.co.uk)